



PARADORES  
ESENTIA

ready to  
**GO!**

PARADOR  
CASA DA ÍNSUA  
(PORTUGAL)



Parador Casa da Ínsua (Portugal) Surroundings

Ready?

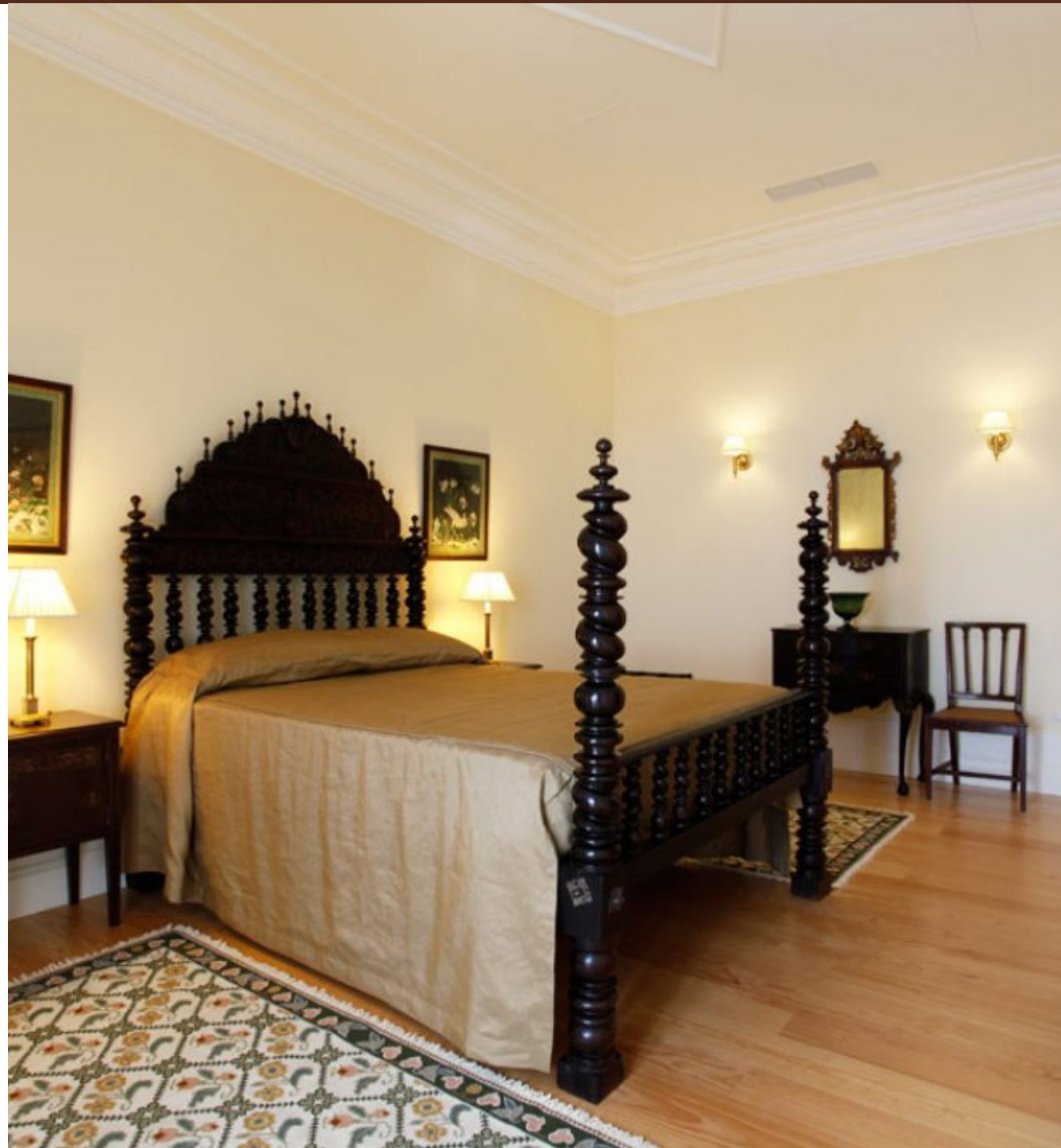
The essential qualities of the founder have been retained in the romantic gardens, architecture and interior décor. Casa da Ínsua offers guests a wonderful opportunity to explore the most characteristic elements of tropical landscapes from the past three centuries, with a wide variety of plant and animal species.

Guests can visit the old smithy, which features restored machinery and tools used in the blacksmith's trade. The hotel boasts 35 stately guest rooms (including nine suites and five apartments). It also offers guests a library, game room, two outdoor swimming pools, gym, chapel, wine cellar for wine tasting and a place to sample regional products prepared using age-old recipes.

PARADORES  
ESSENTIA



Monumental and historic hotels



Parador Casa da Ínsua (Portugal) Rooms



Parador Casa da Ínsua (Portugal) Surroundings

## How to arrive

Casa da Ínsua is located in Penalva do Castelo, in the Portuguese region known as Dão, 25 km from Viseu. It is 220 km from Salamanca and 134 km from Ciudad Rodrigo.

From the A25, take exit 22, Mangualde/Penalva, at kilometer 105. Continue on the N329-1 to Penalva do Castelo. When you reach the center of Penalva, turn left towards Ínsua.

We would like to remind you that a lot of the Portuguese motorways work with an electronic toll system (indicated with "Electronic Toll Only"). In order to avoid fines, we recommend that you visit the website [www.tollcard.pt](http://www.tollcard.pt) so that you understand how this system works.

If you are entering Portugal from Salamanca, the entry toll point to the Parador can be found on the A-25, at the Algo Leomil services in Vilar de Formoso, 8 km from the border. If you have any problems, you can directly contact the Parador.

## Information

Address

3550-126 Penalva do Castelo -  
Portugal

Coordinates

40° 40'34" N, 7° 42'25" W

Director

Susana Cardoso

## Services and facilities



## The Parador Kitchen

Highlights among the products provided by the gardens and lands of this region include Bravo de Esmolfe apples, grown on the property; housemade sheep's milk cheeses with the Serra da Estrela designation of origin; and lastly, sweets from Castendo, all of which allow the Parador Casa da Ínsua to offer a unique culinary experience.

Sample both local Portuguese cuisine and international dishes, accompanied by our own wines, a wonderfully flavorful experience and the perfect opportunity to discover Portugal's gastronomy. And the surroundings make the meal even more unforgettable.

### Chef

Opening Hours

### Cafeteria

10:00 a.m.– 12:00 p.m.

### Maitre

### Desayuno

7:30–10:00 a.m.

### Menú

30

### Almuerzo

12:30–3:00 p.m.

### Menú para grupos

25

### Cena

7:30–10:30 p.m.





## Discover the local area

The current Casa da Ínsua—built in the 18th century by Luís de Albuquerque de Melo Pereira e Cáceres, governor and captain general of Mato Grosso and Guibá, Brazil—sits on the site of the previous Casa da Ínsua—constructed by João de Albuquerque e Castro, fortress governor of Sabugal. It has retained some of the original elements, including the chapel and terrace.

Today, visitors can still find references to the previous owners, especially on the west-facing façade, with an escutcheon bearing the coat of arms of the Albuquerque family and the flowered cross of the Pereira family, as well as the ceiling paintings in the entrance with the family coat of arms.

It is also possible to find traces of Luís de Albuquerque's time in Brazil in various objects, primarily handmade hunting and fishing tools used by the Brazilian Indians and primitive indigenous weapons, as well as military devices of...

## 10 must-visit sites

- Casa da Ínsua Gardens
- Cheese factory
- Winery

## What to do in the area

Viseu (25 km)

- Viseu Cathedral, 16th century
- Walls and gates of the ancient city
- La Misericórdia Church, 18th century
- Archbishop's Palace
- Roman fortification
- Cava de Viriato, defensive structure dating from the Roman Empire



## Expert recommendations

### • Enotourism

The Parador has a winery which produces its own wine from the Casa da Ínsua estate and the Dão Designation of Origin. The Dão River lends its name to this wine-producing region, the second to be demarcated in Portugal (1908). However, these wines had already been noted for their excellence since the kingdom was established in the 12th century, with the clergy, especially Cistercian monks, promoting grape-growing. Planted in schist and granite soil, the vineyards of the Dão are scattered throughout this mountainous region, with the Buçaco, Caramulo, Montemuro and Estrela mountains protecting them from the Atlantic winds.

### • Serra da Estrela Cheese Factory

Learn all about cheese-making techniques at the very factory where Finca Casa da Ínsua creates its delicious cheeses, share in the process and finally, sample them. A fantastic experience. Ask about our organized activities.

### • Museum

The Parador Casa da Ínsua Museum is made up of different areas located in other Casa buildings and structures on the perimeter of the property, all of which were formerly used for production. Embark on a truly innovative journey of discovery. The museum-like presentation allows visitors to engage with spaces that have been restored according to rigorous standards, as well as unique documents associated with the history of the Casa and its owners. Tour the life and history of the founders of Casa da Ínsua, learn how to Brazil was organized during this period, visit an old ice factory, there is much to explore and discover.

### • Casa da Ínsua Gardens

In addition to the importance of its architecture and legacy, the Parador Casa da Ínsua is also known for its magnificent 19th-century gardens, which have long welcomed visitors from around the world. Recreating the atmosphere of the Romantic period, the Casa da Ínsua gardens are noted for their size, as well as the originality and variety of the species they hold. The garden in front of the house, designed in the French style, has a geometric layout and parterres surrounded by boxwood which lead to the English garden and the scent garden, where you will find the most remarkable plant species. Specimens include an extremely rare lotus flower and a historic magnolia dating from 1842.

## We present our new gastronomic spaces



### **Pampered Senses**

Especia restaurants are Paradores' classic restaurants where we offer a traditional menu made up of starters, meat courses, fish courses and desserts.



### **The perfect homage**

Tamizia restaurants are multifunctional spaces that follow current trends in gastronomy.



### **Gastronomic mouthfuls**

The Marmitia restaurants offer an innovative menu with a wide variety of dishes so that diners can choose their own combination of starter, main and dessert.

Monumental and historic hotels

There are places that become travel destinations through which their history can be discovered: castles, palaces, and old monasteries that receive you today with all the comforts that only Paradores know how to offer, but without losing the essence that made them part of our history.

Hotels to enjoy the coast or nature

Close your eyes and imagine a place far away from the hustle and bustle of daily life. In a landscape surrounded by evergreen mountains, a terrace with sea views, a viewing point from which to observe the flight of the birds over a lake. It is something you have within reach but still haven't discovered, because this trip is closer than you think. That getaway to nature is at Paradores.

Urban hotels at the heart of the city

The luxury and the service of Paradores in an urban setting is what you're looking for. Civia arose to offer a hotel where you don't feel like you're just passing through. The Civia collection is made up of Paradores located in the city or nearby where you'll find everything you need, whatever the reason for your visit.





PARADORES

ESENTIA

